

# Mechanical Integrity Manager Pipelines

MI for pipelines poses a particular problem due to the fact that the asset extends over a great distance. For these types of assets, MI Manager uses Google Maps to assist in setting inspection points and display pipeline condition. Data points can be created directly on the Google map, data entered with cellular tablets and information displayed with a click of a mouse.

Data points can be created in the field using a GPS capable tablet or on a PC using Geo locator service from Google Maps (shown).

Once set, inspection data, NDE information from UT meters, Guided Wave Radar, etc. can be entered either in the field with cellular capable tablets or on the MI Manager input screen.

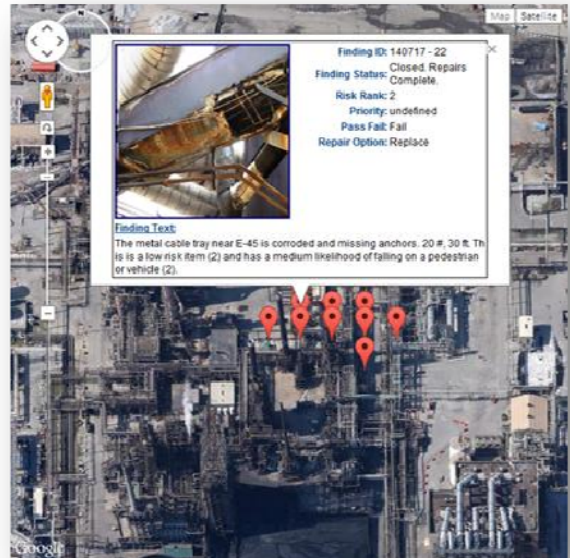
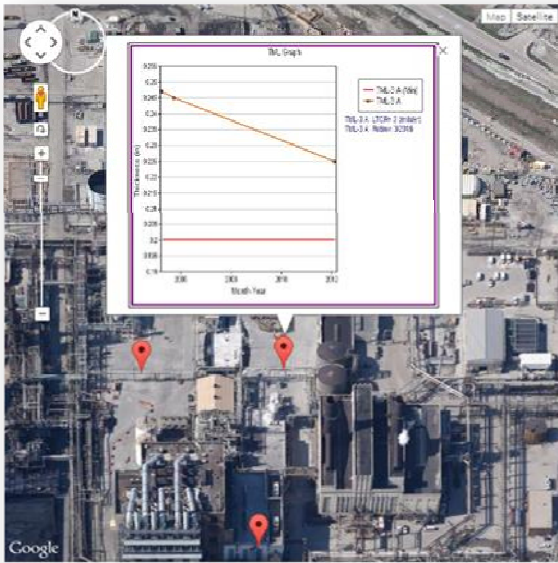
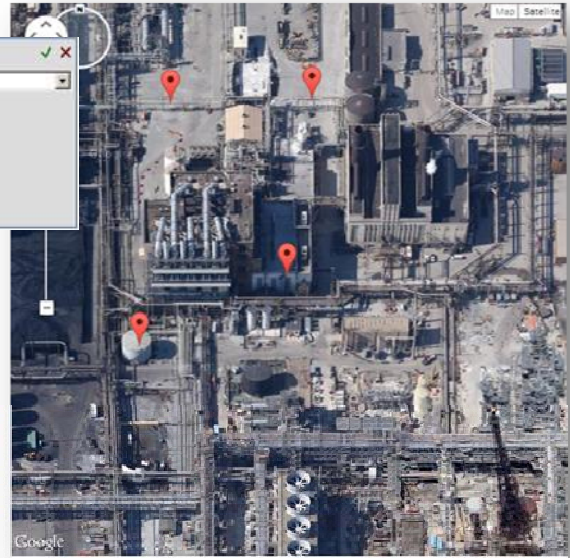


chart (shown above) or the findings information with photos (shown right).

Calculations such as LTRC, end-of-life and MAWP are available with data values.

Also available are Finding Status, Priority, Risk Ranking, Pass or Fail and Repair Option.

Photo and Material Loss Chart are hyperlinked to launch in full screen.